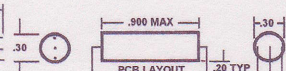
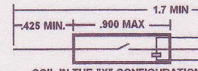
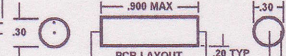
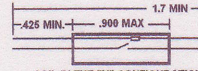
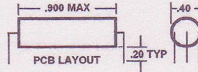
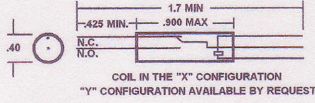


REED RELAYS SERIES 10, SERIES 15, SERIES 20

SERIES 10 & SERIES 15

ELECTRICAL AND OPERATING CHARACTERISTICS



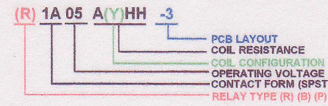
SERIES 15

LEAD WIRES ARE .022 INCHES IN DIAMETER AND ARE PLATED WITH EASILY SOLDERED TIN FOR MAXIMUM SOLDERABILITY. PCB LAYOUT BENT ON 1.00 CENTERS AND .20 INCHES LONG.

SERIES 10

COLUMN NUMBER	1	2	3	4			
CONTACT TYPE	FORM A SPST DRY CIRCUIT	FORM A SPST STANDARD	FORM A SPST HIGH WATT	FORM C SPST STANDARD			
RELAY TYPES	RX-2	BLACK BEAUTY	POWER MAX				
CONTACT RATINGS	VOLTAGE SWITCHING CURRENT SWITCHING POWER SWITCHING CURRENT CARRY CAPACITANCE CONTACT RESISTANCE OPERATE TIME RELEASE TIME TEMPERATURE SHOCK VIBRATION INSULATION RESISTANCE	MAXIMUM MAXIMUM MAXIMUM MAXIMUM TYPICAL TYPICAL TYPICAL TYPICAL	VDC AMP WATTS AMP PF OHMS MS MS DEGREES DURATION	200 .5 5 1 .2 .100 .5 .25 -55C TO +85 C 200G @ 11 MS 50G @ 0-2000 HZ 10 TO THE 10TH	250 1 20 2 .2 .100 .5 .25 -55C TO +85C 200G @ 11MS 50G @ 0-2000 HZ 10 TO THE 10TH	300 2 50 1 .2 .100 .5 .25 -55C TO +85C 200G @ 11MS 10G @ 0-2000 HZ 10 TO THE 10TH	200 .5 10 1 .8 .150 .5 .25 -55C TO 85C 200G @ 11 MS 50G @ 0-2000 HZ 10 TO THE 10TH

NOMINAL COIL VOLTAGE	PICKUP VDC MAXIMUM @ 20 DEG. C	DROPOUT VDC MINIMUM @ 20 DEG. C	1 FORM A (SPST)		1 FORM C (SPDT)	
			PART NUMBER	COIL RESISTANCE +1-10% @ 20 DEG. C	PART NUMBER	COIL RESISTANCE +1-10% @ 20 DEG. C
1	.75	.1	() 1A1A () () 1A1AH () () 1A1AHH ()	3 10 30	B1C1AH	10
5	3.75	.5	() 1A5A () () 1A5AH () () 1A5AHH ()	100 400 700	B1C5AH	200
12	9.0	1.2	() 1A12A () () 1A12AH () () 1A12AHH ()	500 1000 2000	B1C12AH	1000
24	18.0	2.4	() 1A24A () () 1A24AH () () 1A24AHH ()	1000 2000 4000	B1C24AH	2000



WHEN ORDERING THE FORM A (SPST) USE THE LETTER IN FRONT OF THE RELAY TYPES AS FOLLOWS:
(R)RX-2 (B)BLACK BEAUTY (P)POWER MAX.
WHEN ORDERING THE "X" CONFIGURATION LEAVE () BLANK.
WHEN ORDERING THE "Y" CONFIGURATION PLACE THE LETTER (Y) AFTER THE LETTER "A" AS SHOWN ABOVE.
WHEN ORDERING THE RELAYS FOR A PC LAYOUT ADD A (-3) AFTER THE LAST LETTER.

SERIES 20

ELECTRICAL AND OPERATING CHARACTERISTICS

**OPTIONS

- 0 NO OPTIONS
- 1 MAGNETIC SHIELD
- 2 ELECTROSTATIC SHIELD (E)
- 3 HIGH TEMPERATURE
- 4 MAGNETIC SHIELD & HIGH TEMPERATURE
- 5 ES SHIELD AND HIGH TEMPERATURE
- 6 MAGNETIC SHIELD & ES SHIELD
- 7 MAGNETIC SHIELD & ES SHIELD & HIGH TEMPERATURE
- 8 DIODE SUPPRESSION
- 9 MAGNETIC SHIELD AND DIODE SUPPRESSION

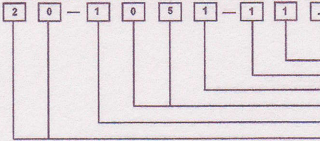
NOTE: MERCURY WETTED RELAYS ARE POSITION SENSITIVE. SEE SCHEMATICS

*SWITCH OPTIONS

- 1 STANDARD FORM A
- 2 STANDARD FORM B
- 3 STANDARD FORM C
- 4 HIGH CURRENT FORM A
- 5 HIGH VOLTAGE FORM A
- 6 MERCURY WETTED FORM A
- 7 MERCURY WETTED FORM C
- 8 HIGH POWER

EXAMPLE:

.100 SPACING, 1 FORM A, 05 VOLTS, 500 OHMS COIL, RESISTANCE, MAGNETIC SHIELD, & A "Y" CONFIGURATION.



- (*) LEAVE BLANK FOR ("X") CONFIGURATION
- ADD (.2) FOR THE ("Y") CONFIGURATION
- **OPTIONS (0 - 9)
- *SWITCH OPTIONS (1 - 8)
- COIL RESISTANCE (MATCH WITH VOLTAGE)
- VOLTAGE
- NUMBER OF POLES
- LEAD SPACING (.20) .100 SPACING (.25) .150 SPACING

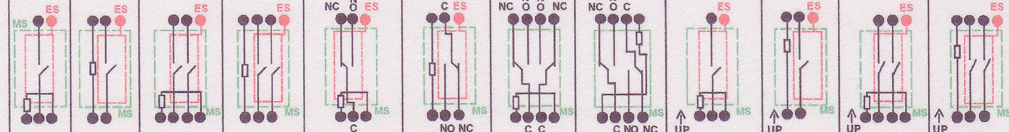
CONTACT TYPE		1 FORM A SPST	2 FORM A SPST	1 FORM C SPDT	2 FORM C SPDT	1 FORM A SPST MERCURY WET	2 FORM A SPST MERCURY WET		
CONTACT RATINGS	VOLTAGE SWITCHING CURRENT SWITCHING POWER SWITCHING CURRENT CARRY CAPACITANCE CONTACT RESISTANCE OPERATE TIME RELEASE TIME TEMPERATURE SHOCK VIBRATION INSULATION RESISTANCE	MAXIMUM MAXIMUM MAXIMUM MAXIMUM TYPICAL TYPICAL TYPICAL TYPICAL	VDC AMP WATTS AMP PF OHMS MS MS DEGREES DURATION	250 1 20 1 .2 .100 .5 .25 -55C TO +85 C 200G @ 11 MS 50G @ 0-2000 HZ 10 TO THE 10TH	250 1 20 1 .2 .100 .5 .25 -55C TO +85 C 200G @ 11 MS 50G @ 0-2000 HZ 10 TO THE 10TH	200 .5 10 1 .2 .100 .5 .25 -55C TO +85C 200G @ 11MS 50G @ 0-2000 HZ 10 TO THE 10TH	200 .5 10 1 .2 .100 .5 .25 -55C TO +85C 200G @ 11MS 50G @ 0-2000 HZ 10 TO THE 10TH	1000 1 100 2 .3 .050 1.0 1.0 1.0 1.0 -30C TO +85C 10G @ 11MS 10G @ 0-2000 HZ 10 TO THE 10TH	1000 1 100 2 .3 .050 1.0 1.0 1.0 1.0 -30C TO +85C 10G @ 11MS 10G @ 0-2000 HZ 10 TO THE 10TH

NOMINAL COIL VOLTAGE	PICKUP VDC MAXIMUM @ 20 DEG. C	DROPOUT VDC MINIMUM @ 20 DEG. C	PART NUMBER							
			1 FORM A (SPST)	2 FORM A (DPST)	1 FORM C (SPDT)	2 FORM C (DPDT)	1 FORM A MERCURY WETTED	2 FORM A MERCURY WETTED		
5	3.8	0.5	20-1051-10-2	20-2051-10-2	20-1051-30-2	20-2051-30-2	20-1051-60-2	20-2051-60-2		
12	8.0	1.0	20-1121-10-2	20-2121-10-2	20-1121-30-2	20-2121-30-2	20-1121-60-2	20-2121-60-2		
24	16.0	2.0	20-1241-10-2	20-2241-10-2	20-1241-30-2	20-2241-30-2	20-1241-60-2	20-2241-60-2		
5			500	200	500	200	75	45		
12			500	440	500	310	300	175		
24			2000	1750	2000	1250	1200	700		

UL94V-0 BOBBIN

GLOSSARY

- NO - NORMALLY OPEN
- NC - NORMALLY CLOSED
- C - COMMON
- ES - ELECTROSTATIC SHIELD
- - COIL LEAD



NOTE: ALL SCHEMATICS ARE TOP VIEWS